

## KINGSMANN FIRELIGHT BIF SOFTSHELL MD

### FLUORESCENT YELLOW NAVY

70018100 POLAR KMFL MD M CE AFNA BI

70018099 POLAR KMFL MD F CE AFNA BI

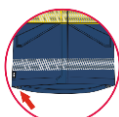
## High Visibility Two-toned All-Purpose Fleece Softshell

### DESCRIPTION

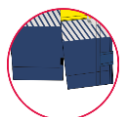
- » Fireproof and antistatic garment with protection against fire, electric arc, welding, acids and cold and with high visibility.
- » Front closure with double flap and zipper closure. Mouthpiece flap. Pull for easy use with gloves.
- » Preformed and detachable sleeves.
- » Two lower pockets with hidden zippered closure. Ergonomic chest pocket with zippered closure.
- » Back flap and waistline adjustment using hidden elastic cord and tankas.
- » Ergonomic adjustable hood with 360° visor.
- » Tool belt loops on chest.
- » Sturdy seams. Pictograms embroidered with fire-retardant thread.
- » Breathable reflective tapes with a modern and dynamic bevelled design.
- » Contrasting colours in high contact areas to avoid soiling. Neck, cuffs, bottom, etc...



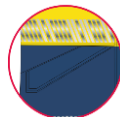
EMBROIDERED PICTOGRAMS



ADJUSTABLE BOTTOM + FLAP



ADJUSTABLE CUFFS



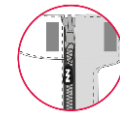
ERGONOMIC POCKETS WITH ZIPPERED CLOSURES



DOUBLE FLAP



ALL-PURPOSE LOOPS



CENTRAL ZIPPER PULL



PREFORMED SLEEVES

» **WIDE SELECTION.** This garment is part of a wide collection of garments with the same line of design and qualities that offer a global solution.

» Garment may be customized with your company logo on the chest and back.

» Durability extended to 50 washes at 60°C in compliance with all the specifications required by standards.



### PROTECTION

#### CAT III

Single garment (With Sleeves)

EN 1149-5:18



EN ISO 11611:15



IEC 61482-2:2018



EN ISO 11612:15



CLASS 2 A1+A2

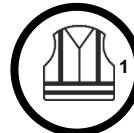
APC 2

A1+A2 B2 C2 F2

EN 14058:17



EN ISO 20471:13/A1:16



EN 13034:05+A1:09



1  
3  
X  
X

TYPE PB(6)

Garment with detached sleeves in combination with Kingsmann Firelight Bif Shirt or Polar

EN ISO 20471:13/A1:16



EN 1149-5:18



EN ISO 11612:15



IEC 61482-2:2018



A1+A2 B1 C1 F1

APC 1

Garment with detached sleeves in combination with Kingsmann Firelight Bif Shirt or Polar and Trousers

EN ISO 20471:13/A1:16



EN 1149-5:18



EN ISO 11612:15



IEC 61482-2:2018



A1+A2 B1 C1 F1

APC 1

**COLOURS** AFNA FLUORESCENT YELLOW NAVY

### MATERIALS

- ✓ Main fabric laminated 3L with membrane 51% Modacrylic 40% Cotton 3% Polyamide 1% Elastane 4% Polyurethane 1% Antistatic ; 545 gr2. FC Treatment.
- ✓ Lining: 45% Modacrylic; 54% Cotton; 1% Antistatic
- ✓ Flexible reflective tape for increased comfort and breathability, resistant to 50 washes at 60°C.

### SIZES

- ✓ Men: XS to 4XL
- ✓ Women: XS to 3XL

### OTHER RELATED PRODUCTS

- ✓ Kingsmann Bif Shirt, Polo and Trousers